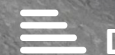


Mulburries

Waterhouse Street, Hemel Hempstead, HP1 1EA

£1,650 Per month 1st May 2025





Waterhouse Street, Hemel Hempstead, HP1 1EA

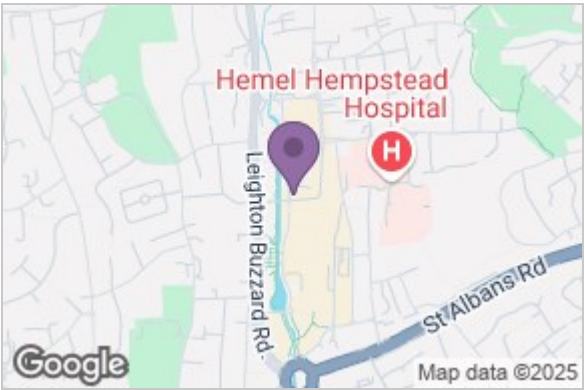
Fully refurbished new to the market, a split-level Maisonette located in the Town centre of Hemel Hempstead.

The ground floors offers entrance hall, kitchen with fitted appliances and gas hob, large living room with storage space. The first floors hosts landing area, two double bedrooms and family bathroom. The property also benefits from double glazing throughout and gas central heating.

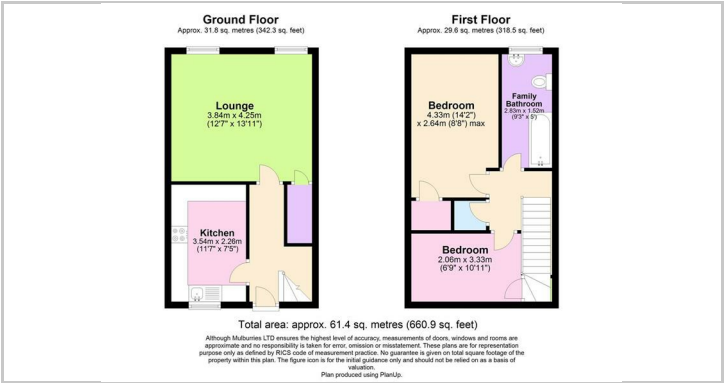
The apartment is accessed via key pad secured entry phone system, positioned very close to Hemel Hempstead town high street and is approximately 1.2 miles to Hemel Hempstead main line train station with direct links into London St Pancras.

- Hemel Hempstead High Street Location
- Two bedrooms
- Large living room
- Kitchen with gas hob
- Double glazing
- Family bathroom
- Central location
- EPC rating E
- Council tax band B
- Appoximatlly 1 mile to main line Train Station

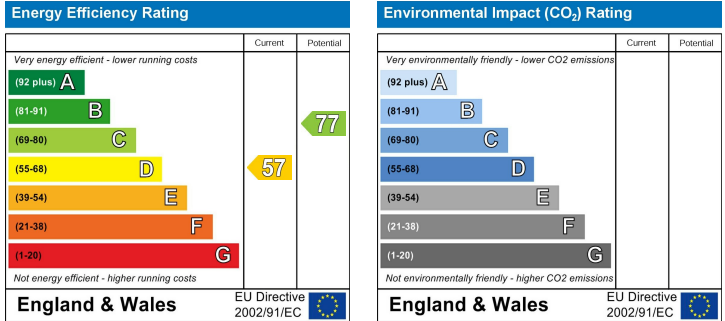
Area Map



Floor Plan



Energy Efficiency Graph



These particulars, whilst believed to be accurate are set out as a general outline only for guidance and do not constitute any part of an offer or contract. Intending purchasers should not rely on them as statements of representation of fact, but must satisfy themselves by inspection or otherwise as to their accuracy. No person in this firms employment has the authority to make or give any representation or warranty in respect of the property.